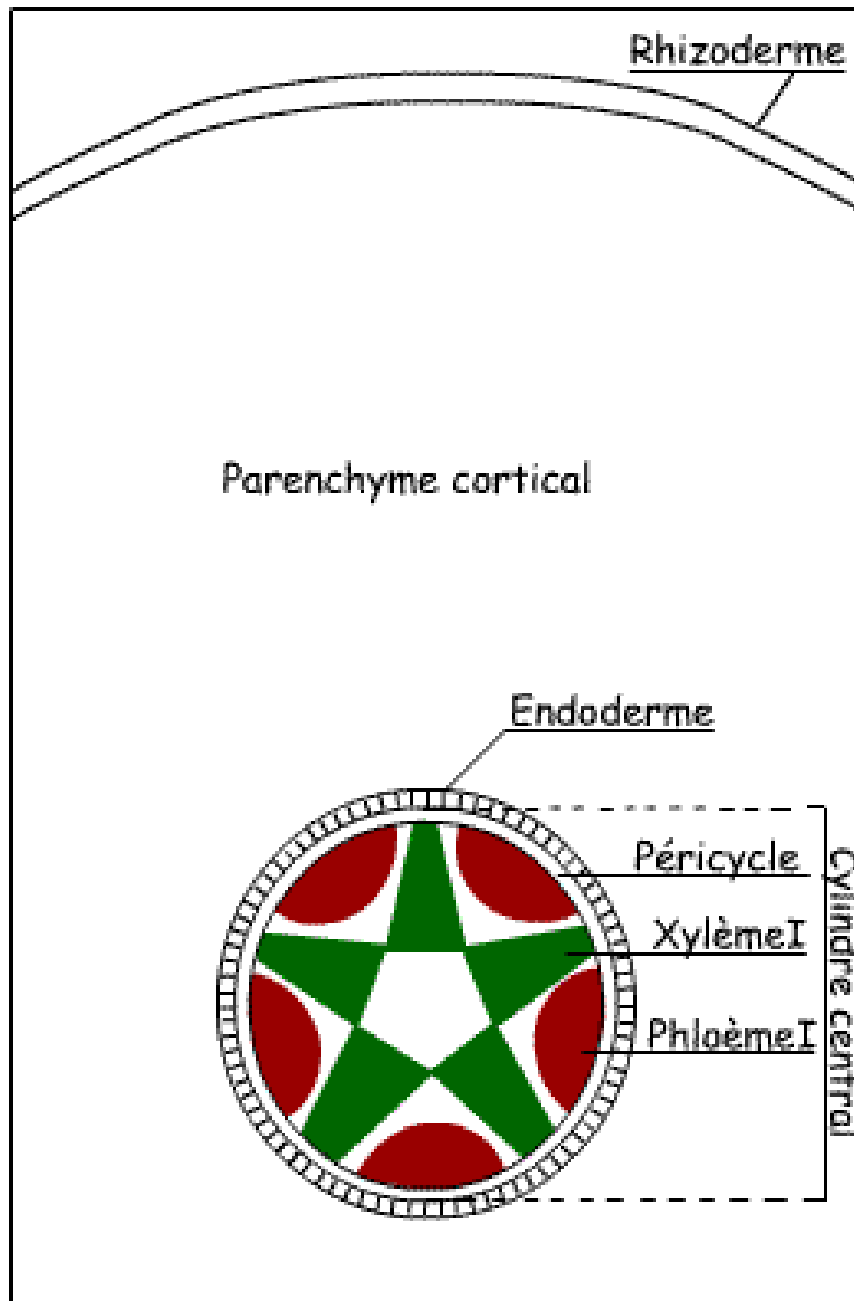


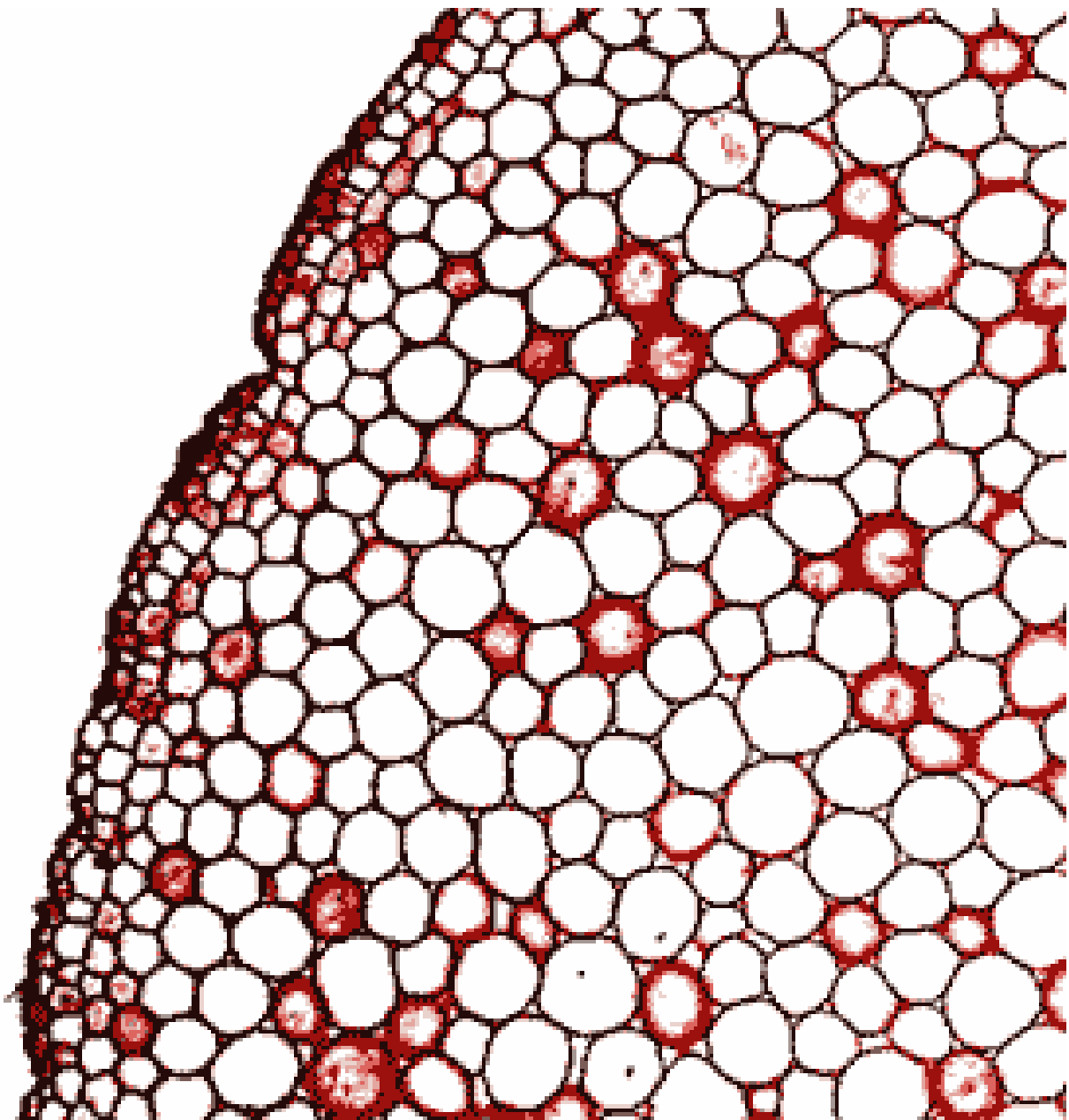
# البنية التشريحية للجذور

**Anatomical structure of roots**

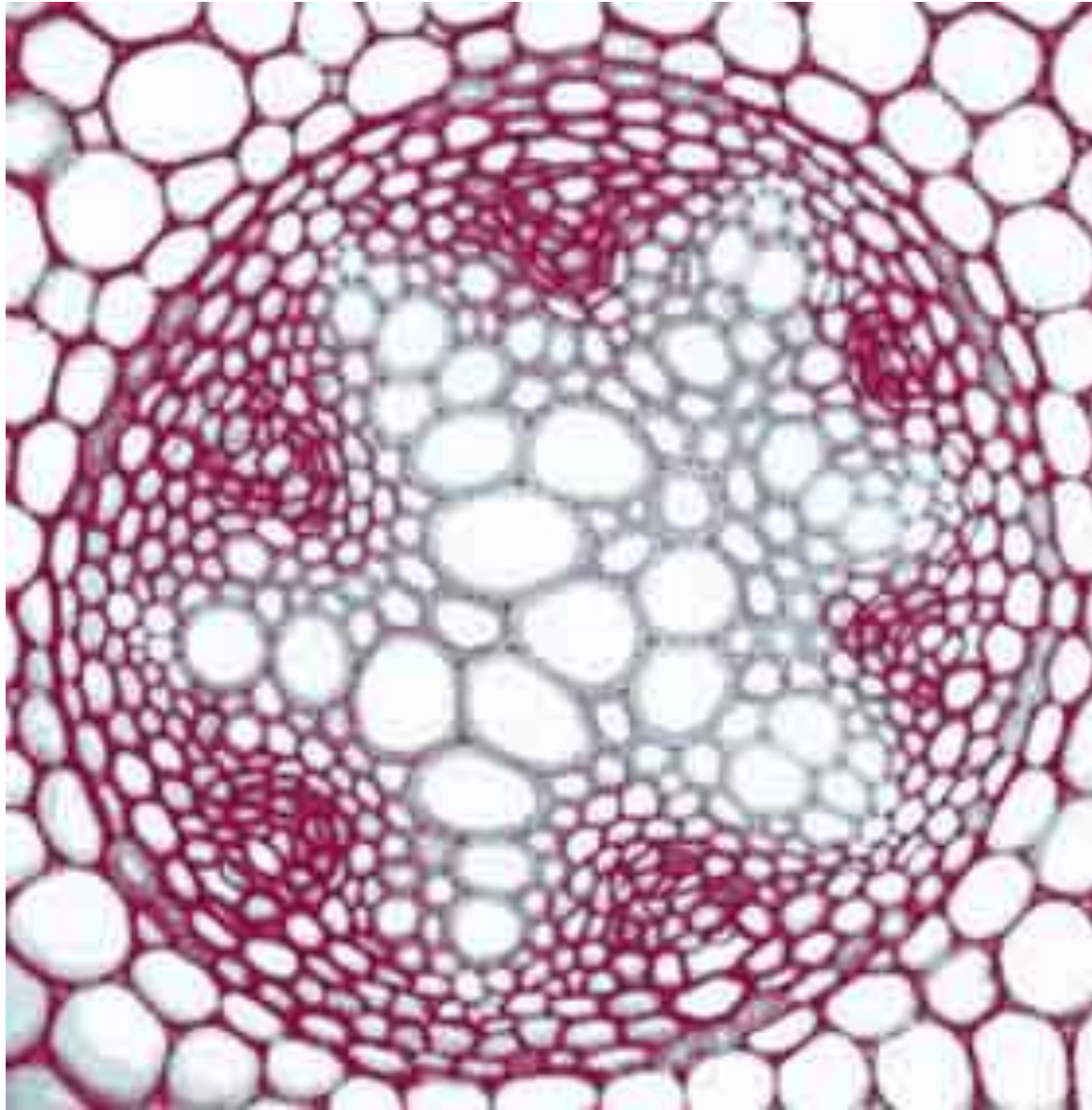




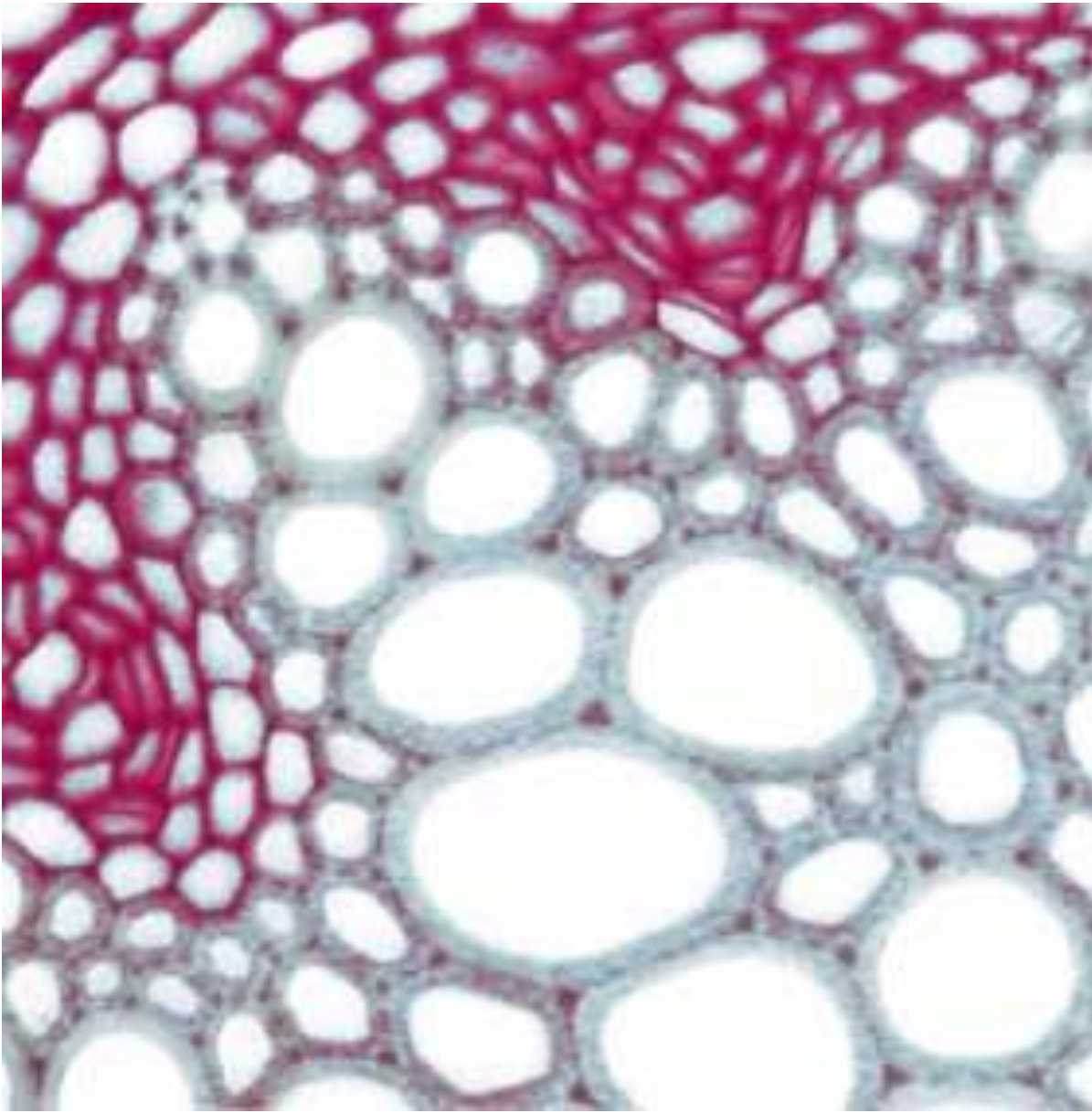
COUPE TRANSVERSALE D'UNE RACINE DICOTYLEDONE



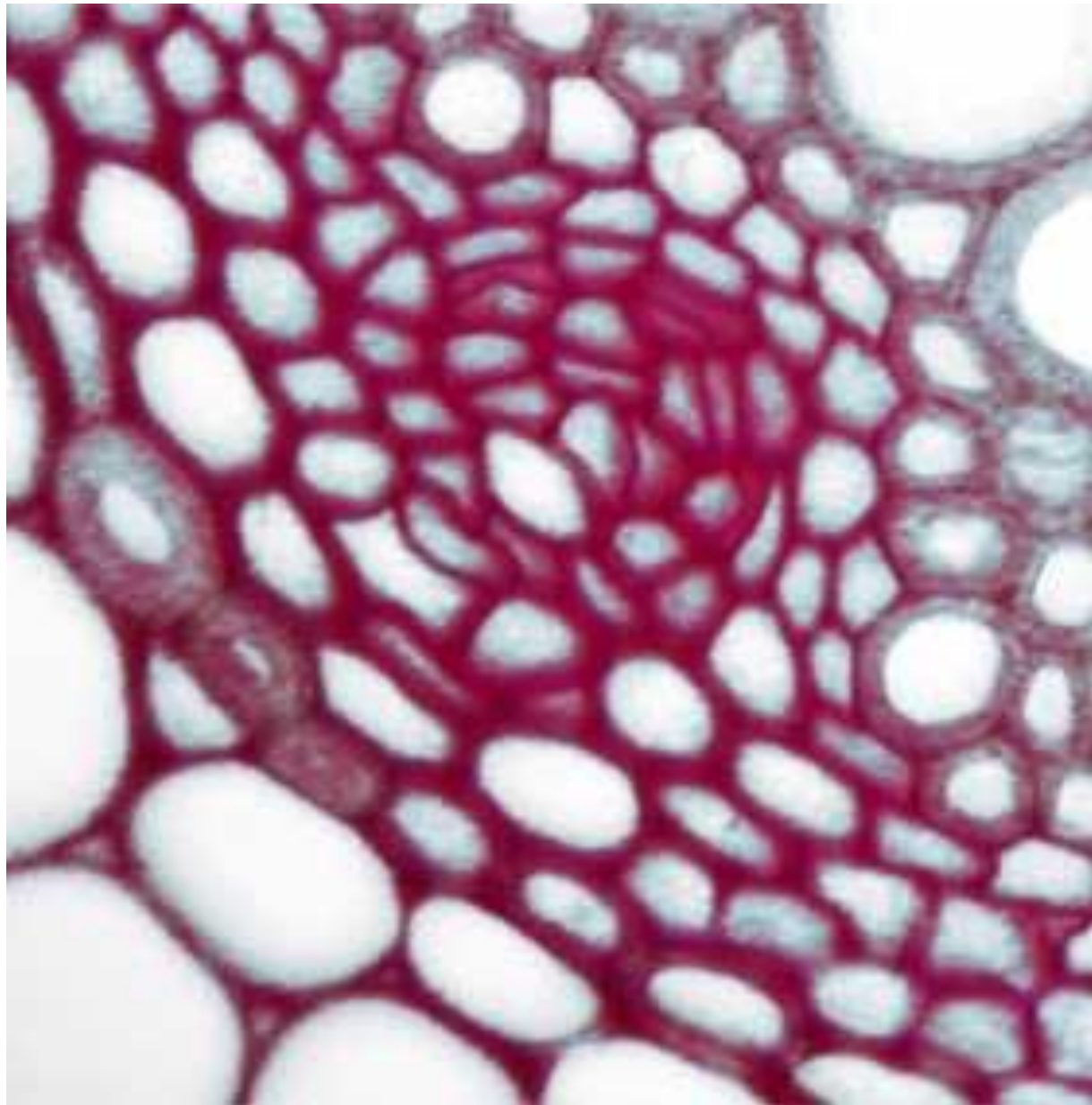
RHIZODERME + CORTEX



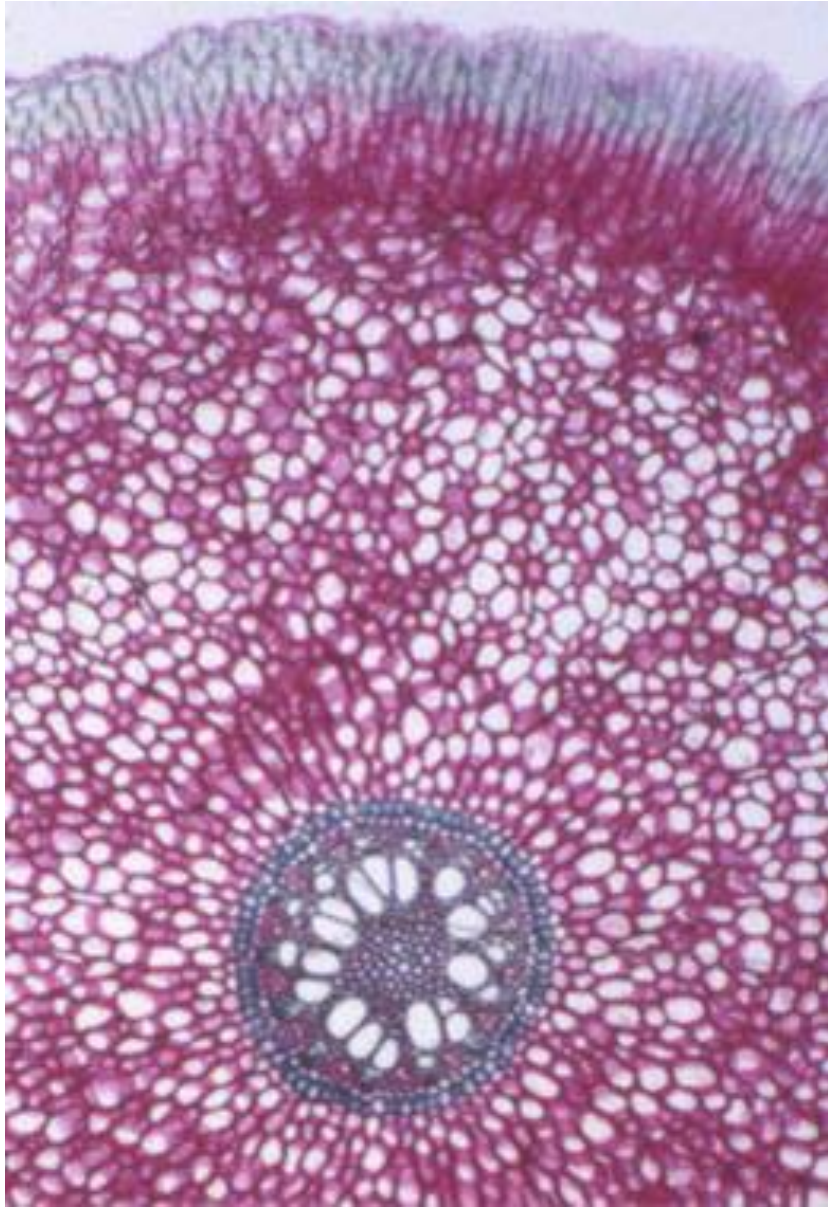
CYLINDRE CENTRAL



XYLEME PRIMAIRE

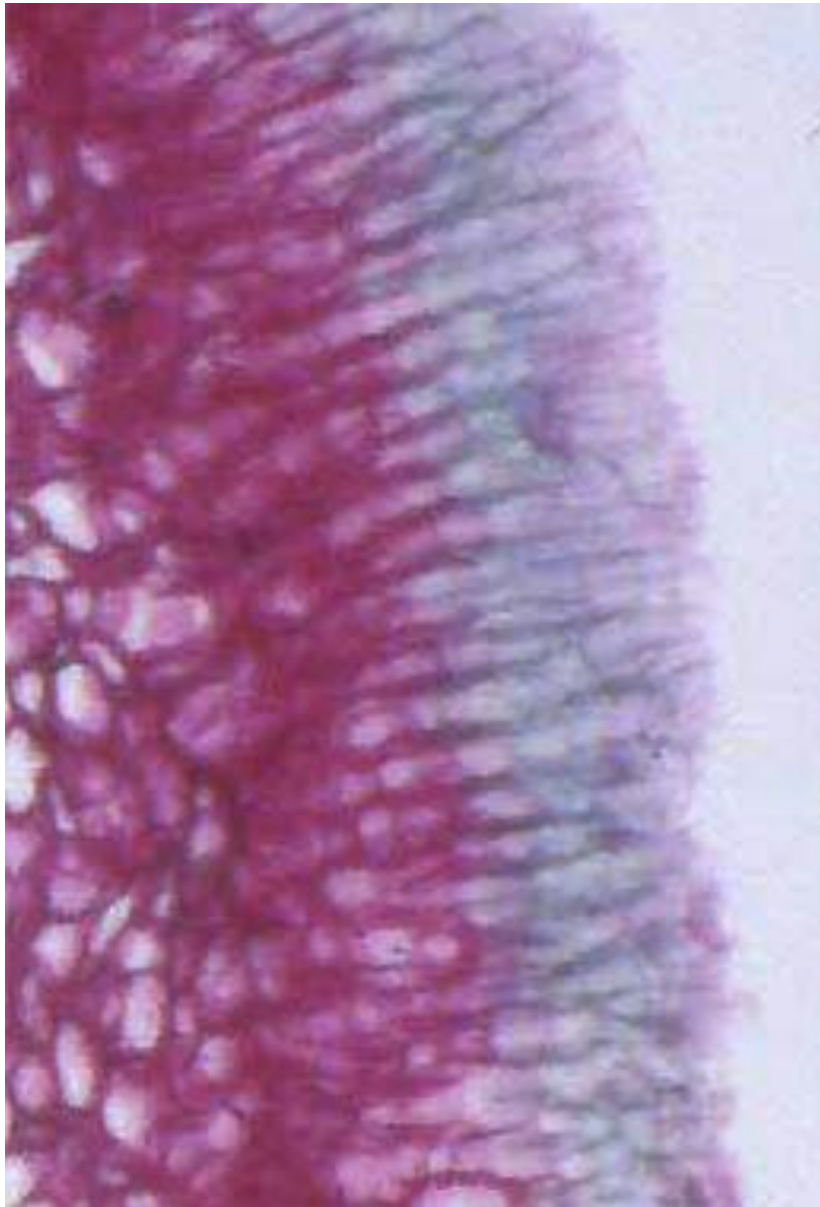


PHLOEM

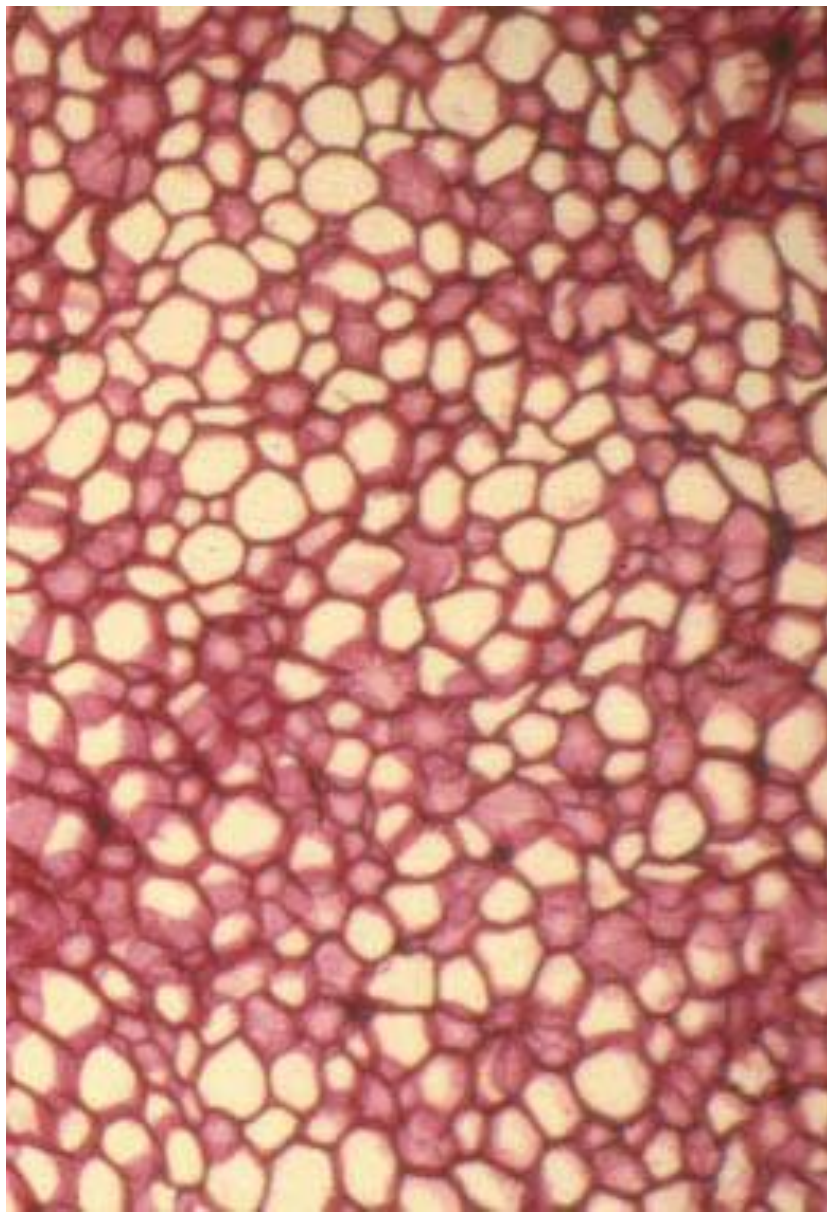


MONOCOTYLEDONE

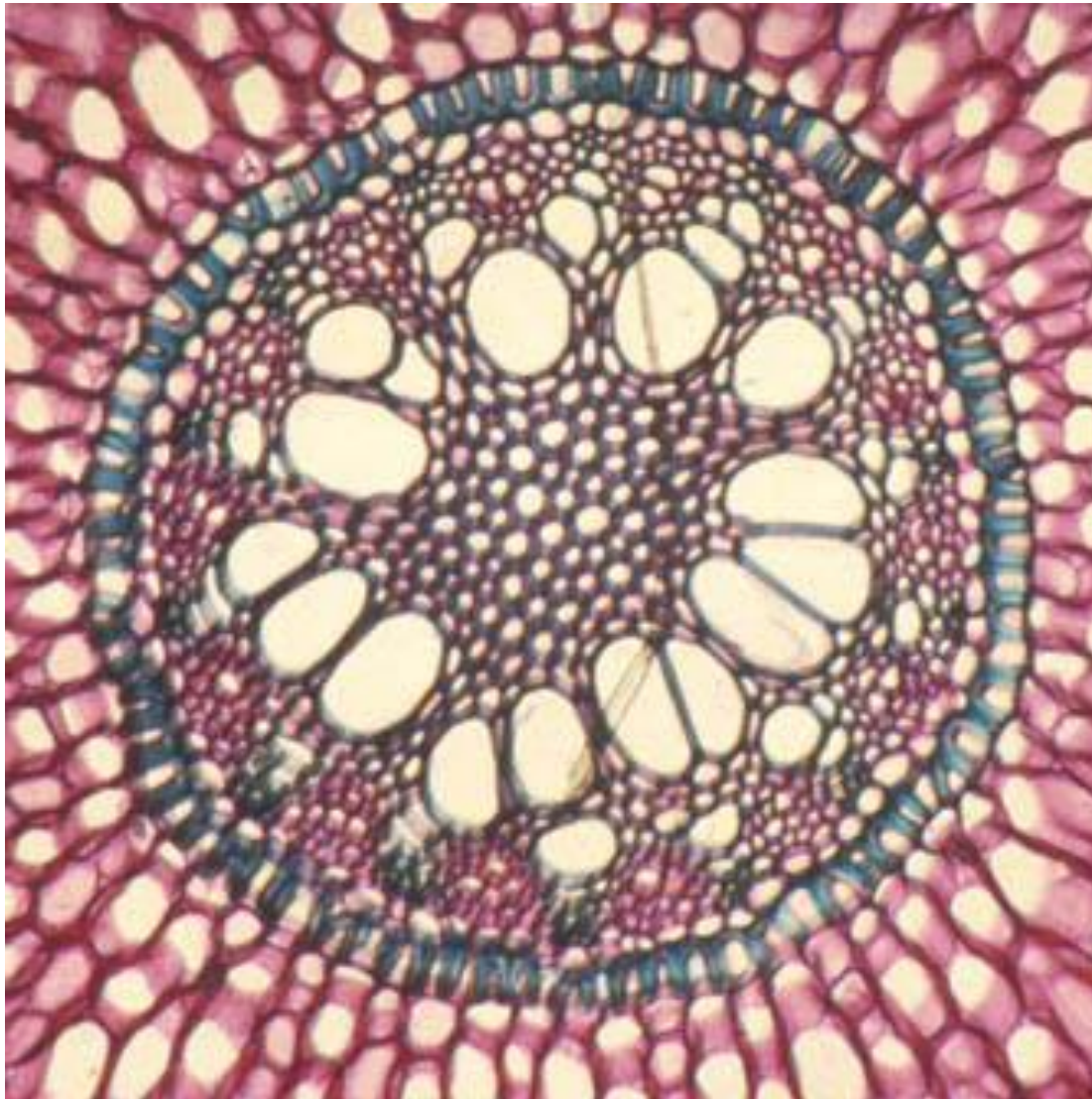




**RHIZODERME + CORTEX**



PARENCHYME CORTICALE



CYLINDRE CENTRAL

