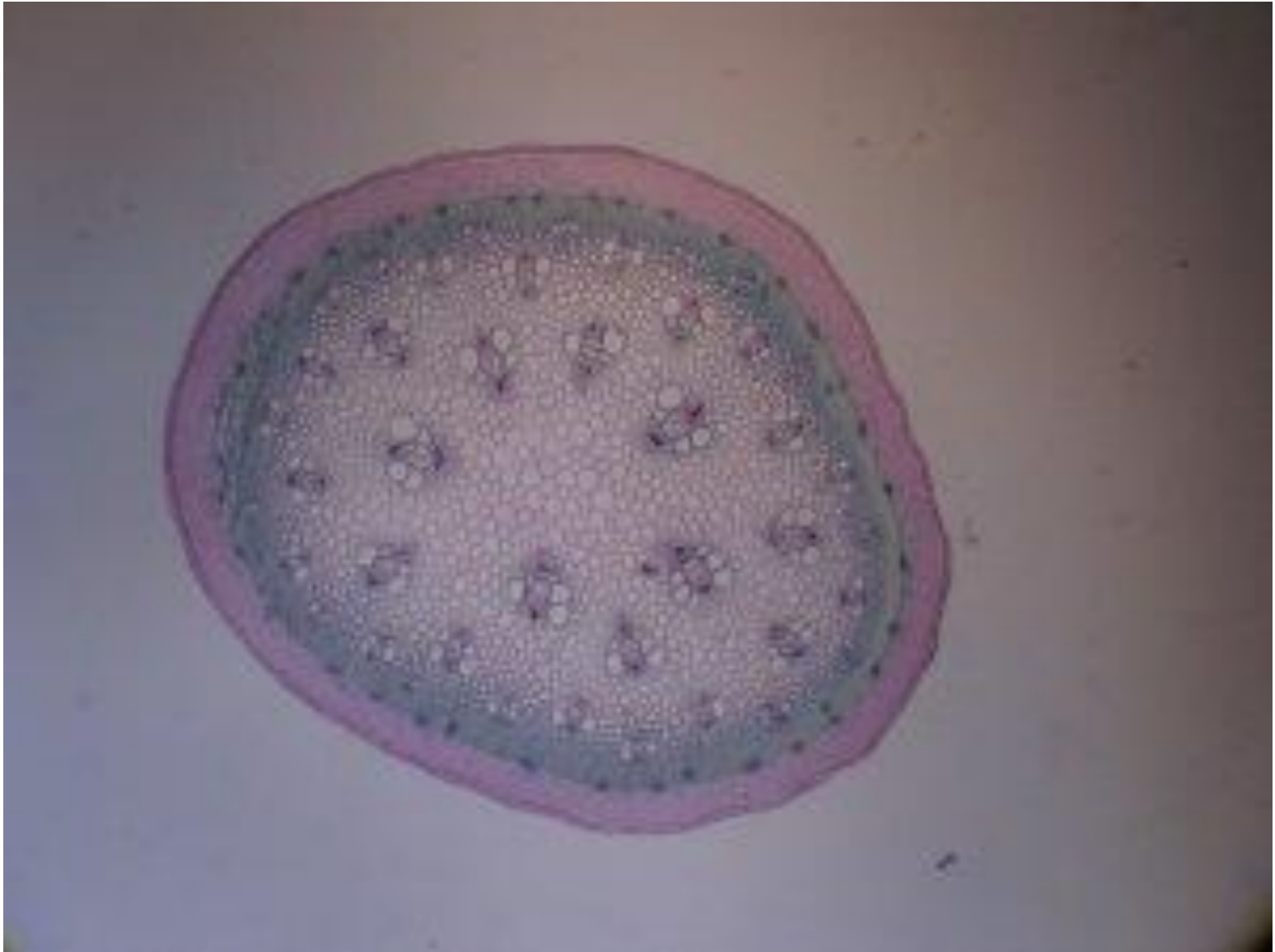


البنية التشريحية للسيقان

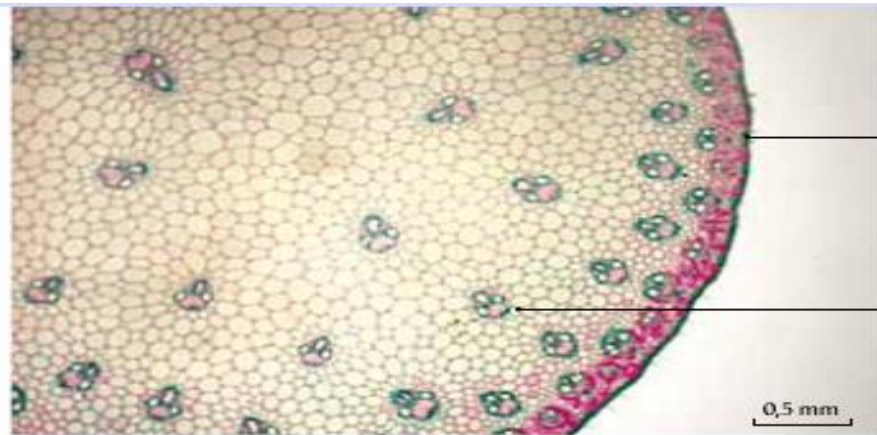
Anatomical structure of stems



Coupe transversale de tige d'asperge monocotylédone



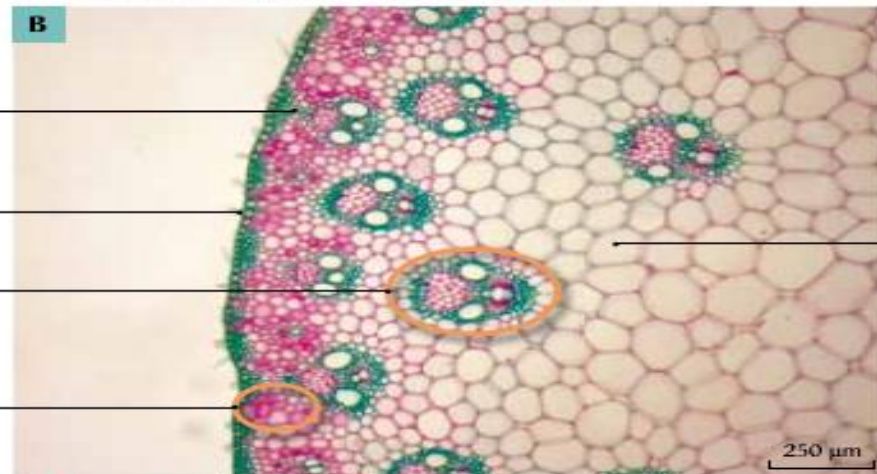
Coupe transversale de tige d'asperge monocotylédone



épiderme lignifié

faisceaux
cribro-vasculaire

0,5 mm



sclérenchyme

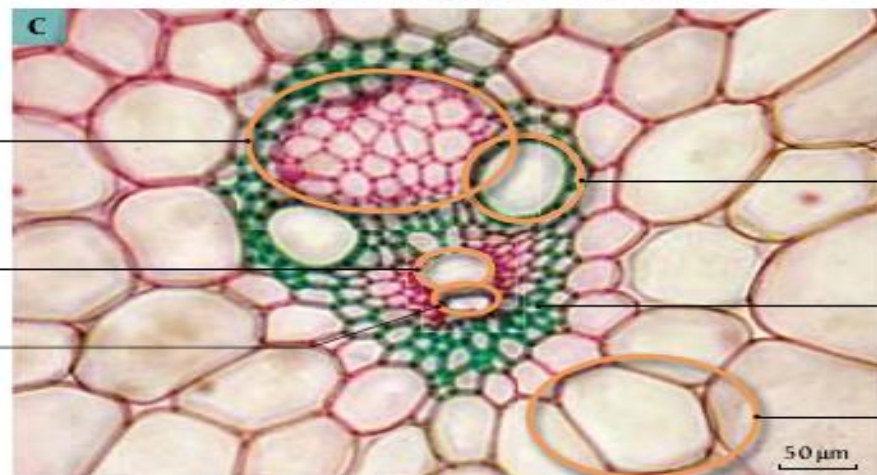
épiderme lignifié
à stomates

faisceau
cribro-vasculaire

parenchyme
cortical

parenchyme

250 μm



phloème I

lacune
du protoxylème

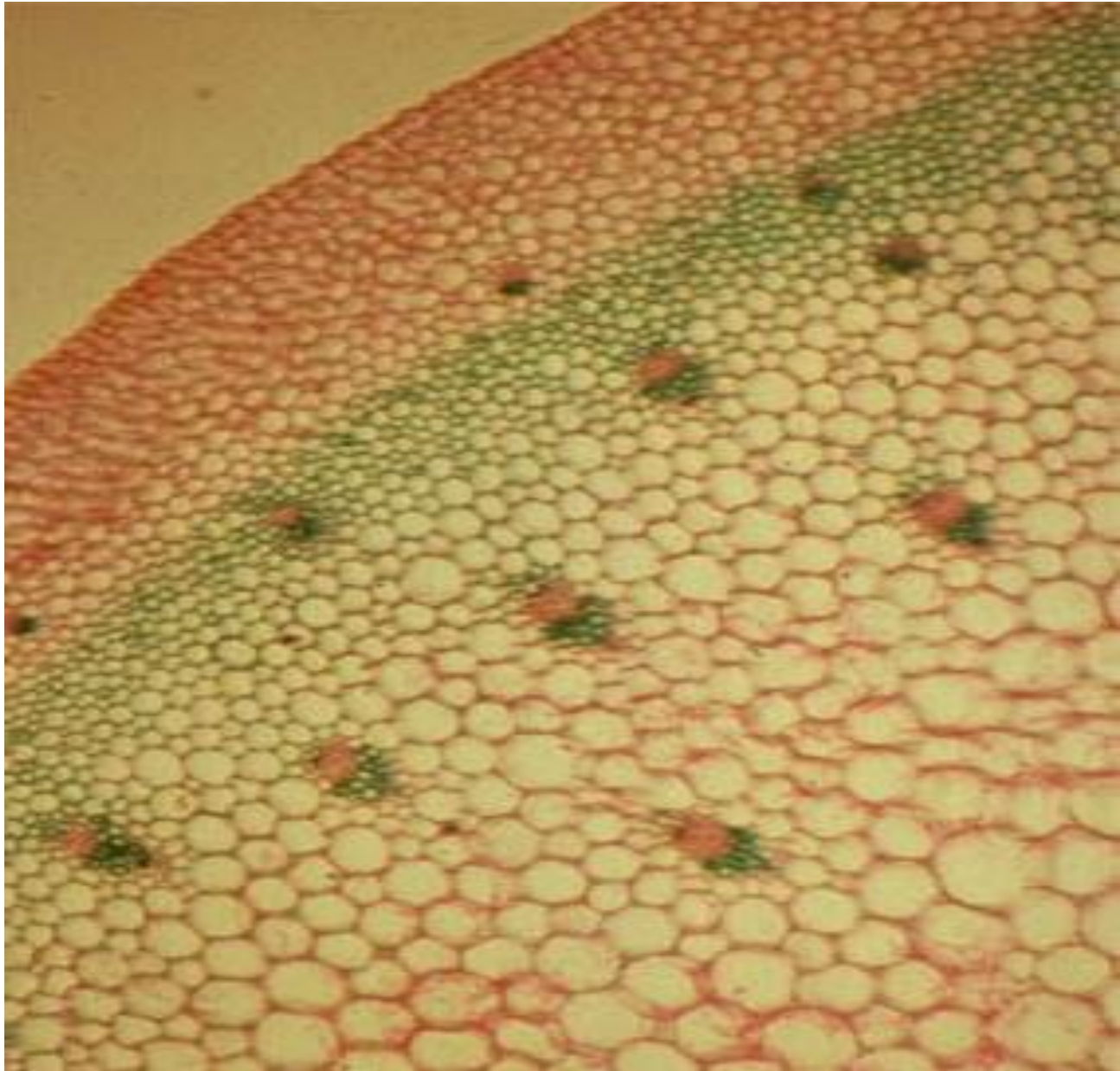
pôle ligneux

vaisseau
du métaxylème

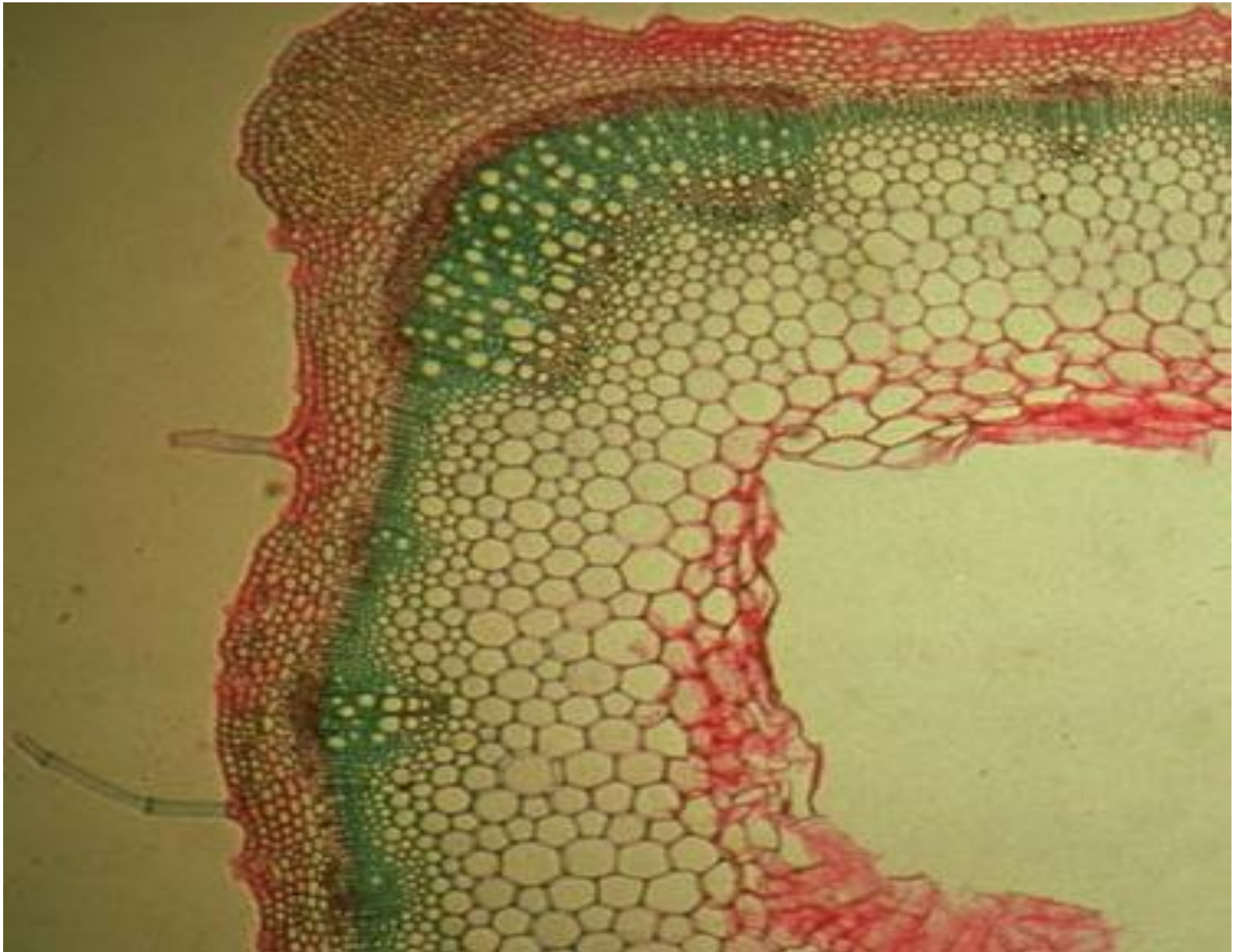
gaine de
sclérenchyme

cellule
parenchymateuse

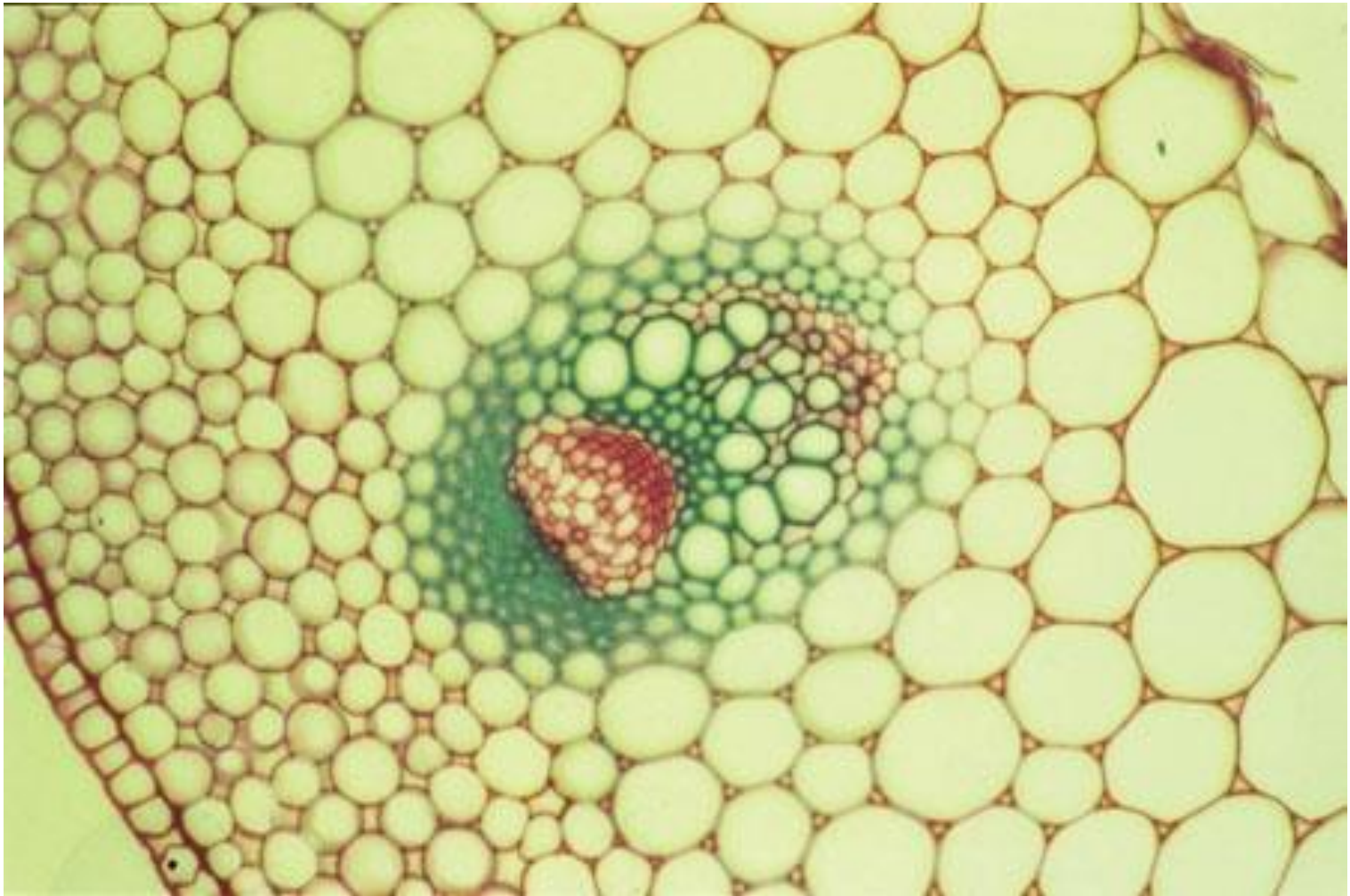
50 μm



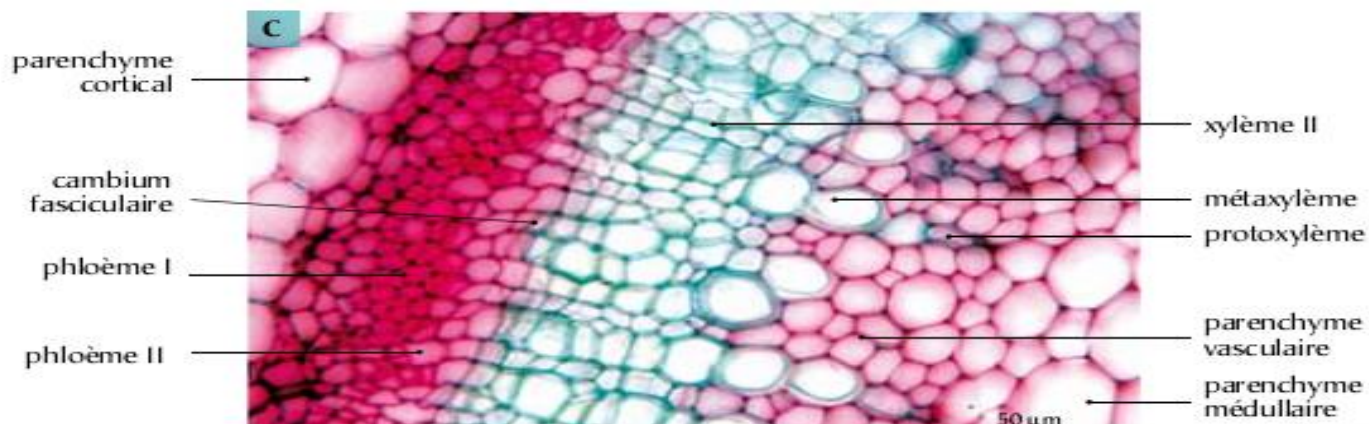
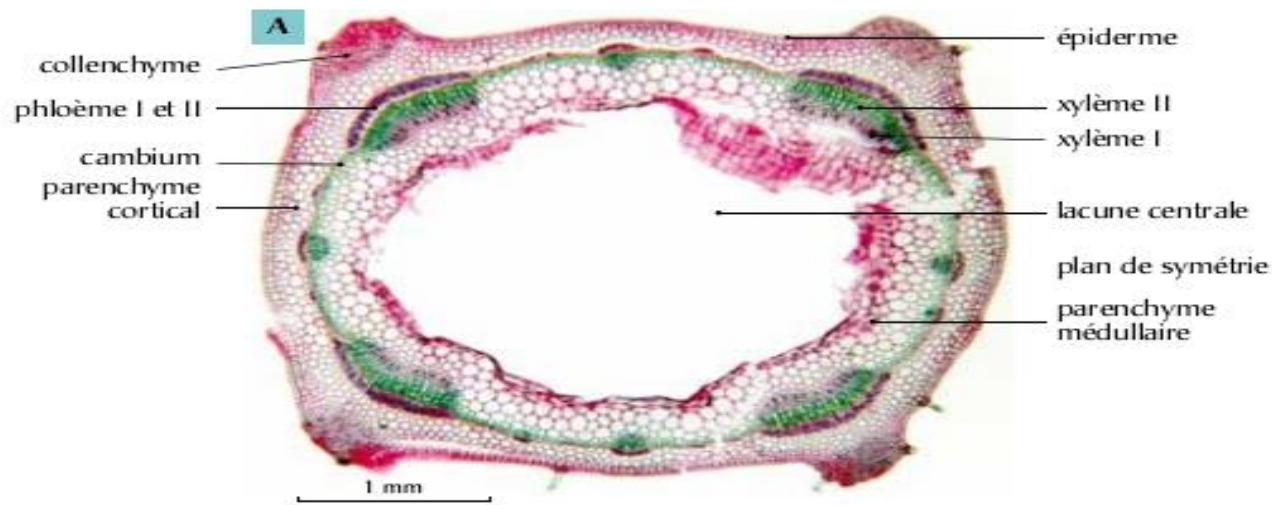
Tige d'une plante Monocotylédone

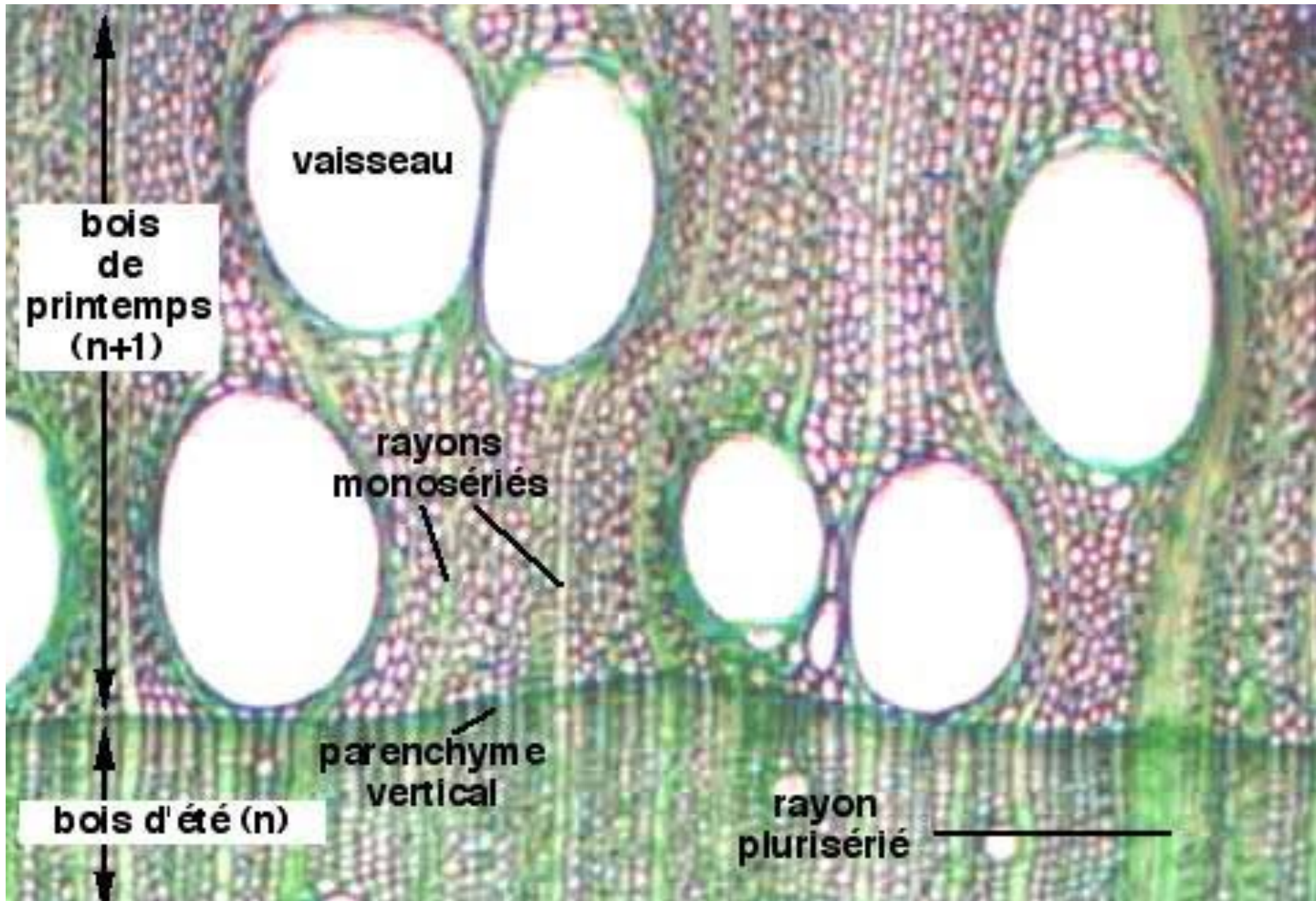


Tige d'une plante Dicotylédone



Tige de dicotylédone, structure. primaire, renoncule





vaisseau

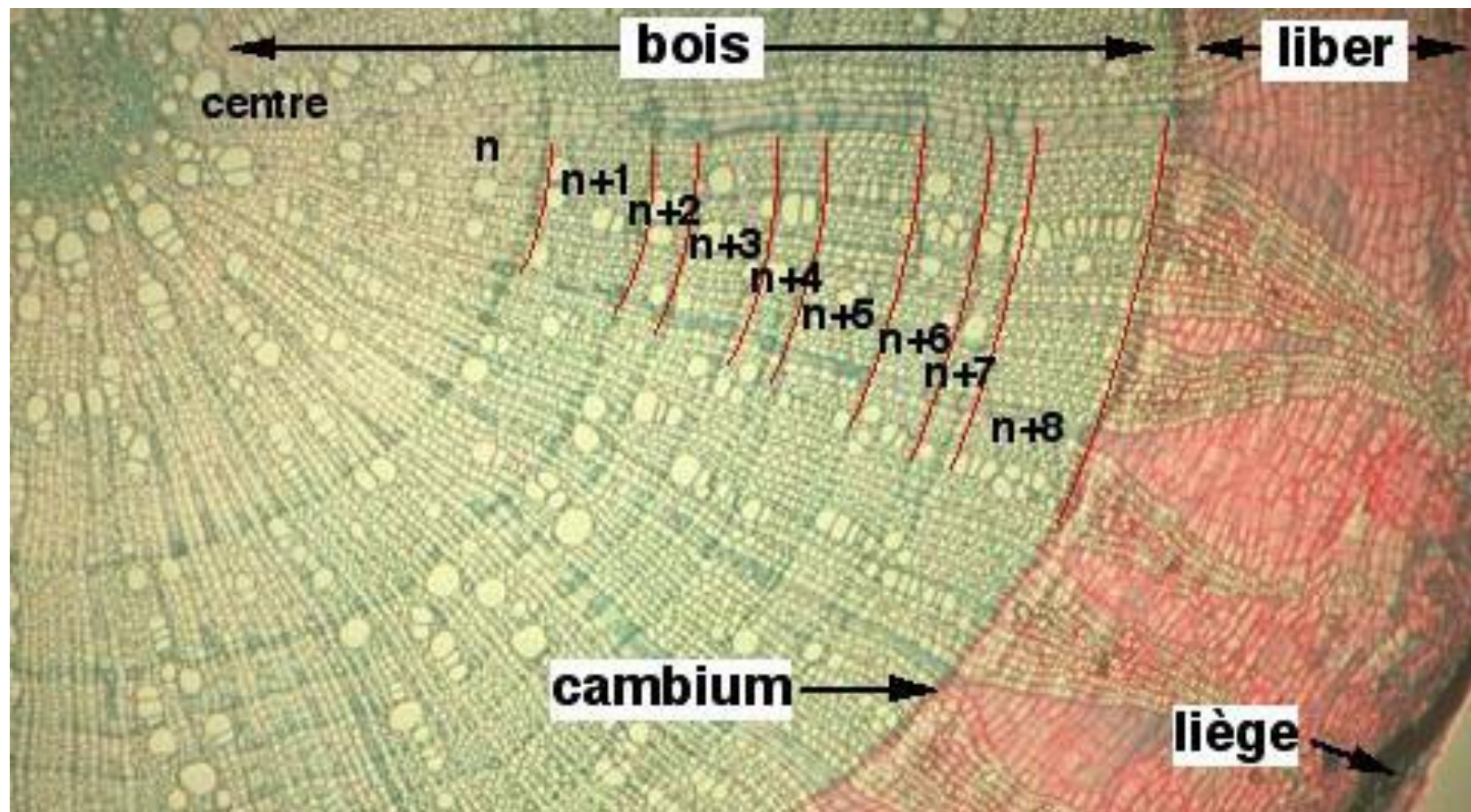
bois de printemps (n+1)

rayons monosériés

parenchyma vertical

bois d'été (n)

rayon plurisérié







trachéides

rayons

